

ULN SD PLN 0014



Visual and Landscape Management Plan

Environmental
Management System

Ulan Coal Mines Limited

Contents

1.	Commitment and Policy.....	3
1.1	Introduction.....	3
1.2	Purpose and Scope.....	3
1.3	Related Documents.....	3
2.	Planning.....	6
2.1	Project Approval.....	6
2.2	Development Approval.....	7
2.3	Internal Guidelines.....	8
3.	Implementation.....	9
3.1	Visual Impact Assessment.....	9
3.2	Visual Controls.....	9
3.2.1	Vegetation Screening.....	9
3.2.2	Lighting.....	10
3.2.3	Buildings and Infrastructure.....	11
3.2.4	Progressive Rehabilitation.....	11
3.2.5	Goulburn River Diversion Remediation.....	11
3.2.6	Ground Disturbance Permit.....	11
3.3	Maintenance of UCML Owned/Leased Land.....	12
3.4	Maintenance of Access Roads.....	12
4.	Measurement and Evaluation.....	13
4.1	Inspections.....	13
4.2	Audit.....	13
4.3	Community Complaints.....	13
4.4	Reporting.....	14
5.	Review and Improvement.....	15
6.	Definitions.....	16
7.	Accountabilities.....	17
8.	References.....	19
8.1	Australian Standards.....	19
8.2	Xstrata plc.....	19
8.3	Xstrata Coal NSW.....	19
8.4	UCML.....	19
8.5	External.....	19
9.	Control and Revision History.....	20
9.1	Document Information.....	20
9.2	Revisions.....	20

1. COMMITMENT AND POLICY

1.1 Introduction

Ulan Coal Mines Limited (UCML) is situated in the central west of New South Wales. It is located in the Mid Western Regional Council (MWRC) Local Government Area (LGA) near the village of Ulan; approximately 38 kilometres north-northeast of Mudgee and 19 kilometres northeast of Gulgong (see **Figure 1.1**). UCML is a joint venture between Xstrata Coal Pty Limited (90%) and Mitsubishi Development (10%), Xstrata Coal NSW (XCN) maintains management responsibility for UCML. The mining operations at UCML are one of a number of mining assets owned and/or managed by Xstrata Coal NSW (XCN).

UCML has recently received Project Approval (08_0184) from the NSW Department of Planning and Infrastructure (DP&I, formerly NSW Department of Planning) on the 15 November 2010 for continued operations. This Project Approval covers current and proposed mining of the Ulan Mine Complex for the next 21 years, and production of up to 20 Mtpa (million tonnes per annum) of product coal. This approval incorporates both underground and open cut mining operations undertaken twenty-four hours a day, 7 days per week. The existing and proposed underground and open cut mining activities and land holdings, including the Bobadeen Irrigation Scheme and Bobadeen Basalt Quarry, as a collective, are referred to within as the Ulan Mine Complex (see **Figure 1.2**).

UCML must also operate in accordance with Development Approval (DA) 113-12-98 whilst mining is occurring in the approved Subsidence Management Plan (SMP) areas covering Longwalls (LW) 23-26 & West 1-3 of the Ulan No. 3 Underground.

This Visual and Landscape Management Plan has been developed in accordance with the conditions of consent specified in **Section 2**.

1.2 Purpose and Scope

As an Xstrata operation, UCML is committed to Xstrata's Sustainable Development (SD) Policy which states that we will minimise the adverse impacts of our operations on the communities in which we operate.

UCML has implemented a number of visual amenity & landscape control initiatives around the operation to mitigate potential impacts on UCML owned and surrounding lands. The purpose of this plan is to ensure the effective implementation of visual amenity and landscaping programs consistent with regulatory obligations.

This plan applies to the Ulan Mine Complex, including all surface facilities and buffer lands.

1.3 Related Documents

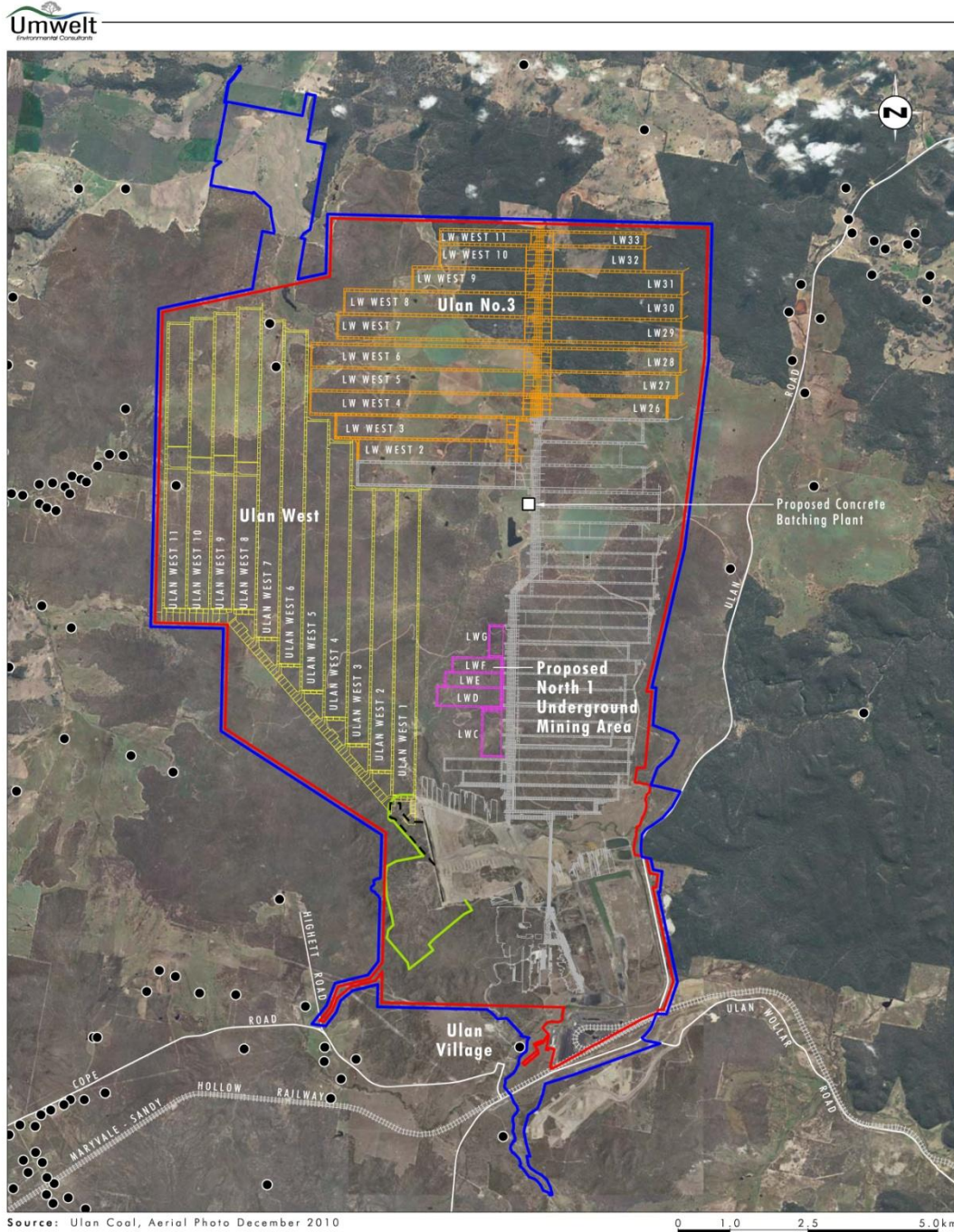
The key documents within the UCML Environmental Management System that relate to, or provide support to this plan include:

- *Environmental Management Strategy (EMS) (ULN SD PLN 0050);*
- *Air Quality & Greenhouse Gas Management Plan (AQGGMP) (ULN SD PLN 0059);*
- *Biodiversity Management Plan (BMP) (ULN SD PLN 0026);* and
- *Integrated Mining Operations Plan (MOP) (ULN SD PLN 0079).*

Figure 1.1: Locality of the Ulan Mine Complex



Figure 1.2: Ulan Coal Continued Operations Project Area



- Legend**
- Colliery Holding Boundary
 - UCML Continued Operations Project Approval Area
 - Approved Open Cut Extension
 - Ulan West Mine Plan (amended)
 - Ulan No.3 Mine Plan (amended)
 - Previous Underground Mining Operations
 - Proposed North 1 Underground Mining Area
 - Box Cut Option
 - Proposed Concrete Batching Plant
 - Private Residence

2. PLANNING

2.1 Project Approval

Conditions of the Project Approval and relevant commitments from the Ulan Coal Continued Operations Environmental Assessment (EA) (Umwelt, 2009) relevant to visual and landscape management, and an indication of where they are addressed in this plan, are contained in **Tables 2.1** and **2.2**.

Table 2.1 PA 08_0184 Conditions relating to Visual and Landscape Management

Condition	Requirement	Section
21 (b) Schedule 3	Operating Conditions The Proponent shall minimise any visible air pollution generated by the project	4.1 (see also AQGGMP)
44 (c) Schedule 3	The Proponent shall prepare and implement a Biodiversity Management Plan for the project to the satisfaction of the Director-General. This plan must include: <ul style="list-style-type: none"> • a detailed description of the measures that would be implemented over the next 3 years, including the procedures to be implemented for <ul style="list-style-type: none"> ◦ landscaping the site, and particularly the land adjoining public roads, to minimise visual and lighting impacts 	BMP
52 Schedule 3	Visual Amenity and Lighting The Proponent shall: <ol style="list-style-type: none"> a) minimise the visual impacts, and particularly the off-site lighting impacts, of the main infrastructure area and associated ancillary surface works; b) take all practicable measures to further mitigate off-site lighting impacts from the project; and c) ensure that all external lighting associated with the project complies with Australian Standard AS4282(INT)1995 – Control of Obtrusive Effects of Outdoor Lighting, to the satisfaction of the Director-General. 	3.2

Table 2.2 Commitments relating to Visual and Landscape Management

Commitment	Section
6.12.1 UCML will implement the following visual controls to screen or filter views of the project infrastructure from residential and public road locations: <ul style="list-style-type: none"> • maintaining vegetation screening along Ulan Road; • ensuring that all lighting associated with the project complies with Australian Standard AS4282(INT)1995 – Control of Obtrusive Effects of Outdoor Lighting; • all buildings and infrastructure potentially visible to the public to be coloured in suitable natural tones, where practicable; • directing light towards work areas and not towards private residences; • progressive rehabilitation of disturbed areas; and • revegetation will be progressively undertaken of the Goulburn River Diversion, as described in Section 5.4 of the EA. 	3.2

2.2 Development Approval

Table 2.3 summarises the requirements of DA 113-12-98 and the section of the plan where the requirement has been addressed. Where there are inconsistencies between the approvals or a condition has been superseded, this condition has been struck out.

Table 2.3 DA 113-12-98 Conditions relating to Visual and Landscape Management

Condition	Requirement	Section
3.2 (d) Schedule 2	Environmental Management Strategies and Plans The Applicant shall prepare the following environmental management plans; <ul style="list-style-type: none"> • Landscape management plan (refer Condition 3.7(a)) 	This Plan (see also BMP)
3.7 (a) Schedule 2	Visual Amenity and Landscaping a) The Applicant shall, prior to the commencement of construction works in the relevant area, submit for the approval of MeSC and MuSC a detailed Landscape and Revegetation Management Plan for the surface facility sites prepared by a suitably qualified person. The plan shall include, but not be limited to:	3.2.1 (See also MOP and BMP)
	i. details of the establishment of vegetation and the construction of mounding or bunding, for the purposes of maintaining satisfactory visual amenity, ecological functioning and habitat provision;	
	ii. consideration of revegetation works along creek lines;	Refer to BMP
	iii. use of indigenous species;	3.2.1 (See also MOP and BMP)
	iv. details of the visual appearance of all buildings, structures, facilities or works (including paint colours and specifications). Buildings and structures shall be designed and constructed so as to blend as far as possible with the surrounding landscape; and v. details, specifications and staged work programs to be undertaken, including a maintenance program of all landscape works, building materials and cladding.	3.2.3

2.3 Internal Guidelines

XCN guideline *Environment, Biodiversity and Landscape Functions (XCN SD GDL 0010)* requires all XCN sites to develop and implement an Annual Rehabilitation Plan in accordance with the *XCN Rehabilitation Improvement Program - Annual Rehabilitation Planning Guideline (XCN LP ANN 0001)*. As a minimum, the Annual Rehabilitation Plan must detail the current status of rehabilitation, the rehabilitation program for the following budget (calendar) year, integration of rehabilitation into longer term planning (Life of Mine), as well as resourcing, across a number of key areas including "Visual Mitigation".

Section 3.6 of *Environment, Biodiversity and Landscape Functions (XCN SD GDL 0010)* also requires that, wherever possible, residential properties owned by UCML are maintained in a manner that preserves their existing condition and sustains adequate visual amenity. This includes vacant residential land within Ulan Village and Gulgong.

3. IMPLEMENTATION

3.1 Visual Impact Assessment

A visual assessment was undertaken for the Ulan Coal Continued Operations Project EA (Umwelt 2009) to determine potential impacts on visual amenity. The assessment concluded that the natural topography, existing vegetation and long sight distances to the mine heavily restrict the visibility of UCML's operations from surrounding residential receiver locations. However, some minor unobstructed views of the UCML facilities will continue to be available to passing road commuters on Ulan Road, Ulan-Wollar Road and Cope Road.

The majority of the Project involves underground mining, which has very little surface visibility, other than relatively minor components of infrastructure required to support underground mining such as ventilation fans, service boreholes and power infrastructure.

Elements of the Project that will potentially be visible from public viewing locations are generally limited to previous open cut mining operations, surface infrastructure associated with the coal clearance system and Coal Handling and Preparation Plant (CHPP) area. The visually dominant features of the Project include the hub stockpile complex, sizing station and southern infrastructure area around the CHPP.

Visually prominent features of the Project in the night landscape will be lighting associated with the CHPP, stockpiles, workshops, mobile plant travelling along haul roads and overburden emplacement areas and active open cut mining operations.

3.2 Visual Controls

The following visual controls will be implemented to screen views of the Project and minimise visual impacts:

- Maintaining vegetation screening along Ulan Road;
- Ensuring that all lighting associated with the Project complies with *AS4282 (INT) 1997 – Control of the Obtrusive Effects of Outdoor Lighting*;
- Aiming to minimise night lighting impacts on surrounding land owners by ensuring, where practicable, that lighting plants are positioned such that lighting is directed towards work areas and not towards private residences;
- All buildings and infrastructure potentially visible to the public to be coloured in suitable natural tones, where practicable;
- Progressive rehabilitation of disturbed areas to reduce visual impacts; and
- Revegetation will be progressively undertaken of the Goulburn River Diversion, as described in the *Goulburn River Diversion Remediation Plan (ULN SD PLN 0054)*.

3.2.1 Vegetation Screening

UCML has completed native vegetation planting to screen views of mining operations as part of its progressive rehabilitation program. Extensive vegetation planting has been undertaken on the southern boundary along Ulan Road (identified as Domain 10 in the *MOP (ULN SD PLN 0079)* and *Conceptual Mine Closure Plan (ULN SD PLN 0084)*) and around the southern end of the Goulburn River Diversion.

Where surface facilities are visible from a public viewing point and where the facilities are over 3 metres high, earth bunding may be established to assist visual screening of the facilities. Tree planting or seeding (with indigenous species) may also be undertaken on these bunds.

Where surface facilities are less than 3 metres in height and visible from a public viewing point, tree screen planting will generally be undertaken. Revegetation details will be the same for both bunds and other planted areas.

UCML will conduct native tree screening and seeding in accordance with the *MOP (ULN SD PLN 0079)* and *BMP (ULN SD PLN 0026)* however the following provides a general description of the site preparation, tree spacing and other details that are to be considered when establishing tree screen plantings:

- Site preparation - tree lines will be deep ripped to a minimum depth of approximately 400mm prior to planting;
- Spacing layout - taller trees will be alternated with shrubs. Trees will be planted approximately 3 metres apart in rows. Rows will be approximately 3 metres apart.
- Tree planting - trees will be protected by biodegradable mesh hare guards supported by two bamboo stakes (where possible/feasible). Two (2) slow release 21g fertilizer pills will be placed at the base of each root ball. All trees will be watered and weeded as required. Any losses will be replanted within six (6) months.

The Environment and Community Officer is responsible for ensuring that all tree screens and bunds are maintained to ensure that they meet their intended purpose. This includes, but is not limited to, the following:

- Controlling weeds that can compete with the "screening" species;
- Replacing tube-stock that are not successfully established; and
- Controlling pests and disease that may result in the screening capacity of the vegetation to be reduced.

3.2.2 Lighting

UCML operate a twenty-four (24) hour operation. The facilities are lit at night; however, since operations in this area are limited to mine access and hygiene activities the level of lighting required and its impacts are minimal. UCML have significant buffer lands between the operations and adjacent receptors which mitigate against lighting impacts. Lighting is directed away from the points along Ulan Road where the mine is visible.

On site rehabilitation and screen planting, along with the fact that mining activities in the open cut are typically under the pre-existing surface level of the ground, reduces the visual impact of lighting from open cut operations.

Australian Standard AS4282 (INT) 1997 – Control of the Obtrusive Effects of Outdoor Lighting was first introduced by Standards Australia in 1995. The current 1997 standard supersedes the earlier standard.

In November 2010 UCML engaged Multiskilled Resources Australia to undertake an audit of UCML's operations to determine compliance with *AS4282 (INT) 1997 – Control of Obtrusive Effects of Outdoor Lighting* (Multiskilled Resources Australia, 2010). The audit found that UCML generally complied with AS4282. A number of recommendations were made to reduce lighting impacts from the operation. These recommendations were entered into XstraSafe as actions for follow up by relevant people.

A lighting audit will be undertaken annually for all new infrastructure to ensure UCML is complying with AS4282.

3.2.3 Buildings and Infrastructure

Where it is possible to dictate a colour preference, all infrastructure will be painted a colour similar to Dulux™ colour bond “Rivergum Green”. The condition of painted structures will be assessed periodically and repainted as required.

Buildings and structures will be designed and constructed so as to blend as far as possible with the surrounding landscape.

As mentioned in **Section 3.2.1** above, a native tree screen has been planted along Ulan Road to reduce the visual impact of the CHPP infrastructure area on users of the Ulan Road. These trees were planted in 2008 and, as they grow, will continue to reduce visual impacts of the mine on passing motorists.

3.2.4 Progressive Rehabilitation

Site rehabilitation is an important component in any mining operation. Ongoing rehabilitation forms an important part of visual amelioration. A significant proportion of the areas disturbed by mining has been rehabilitated.

Areas needing rehabilitation include the current out of pit dumps as well as corridors used for utility services such as power and water, exploration and drilling roads, and areas where facilities once existed. In all cases rehabilitation of the affected areas occurs as soon as practicable. Where these disturbances occur adjacent to creek lines, these sites would be rehabilitated as a high priority.

UCML minimise land disturbance where possible and aim to rehabilitate land as soon as possible after disturbance. Infrastructure areas such as access tracks/roads and drill sites that are no longer needed will be ripped to alleviate compaction and increase infiltration. Earth works to control drainage and provide sediment and erosion control will be constructed where necessary. Any pre-stripped topsoil will be re-spread and fallen timber and leaf litter will be placed along roads to aid in rehabilitation and provide habitat for local fauna.

For further information on rehabilitation works undertaken onsite refer to the *MOP (ULN SD PLN 0079)*.

3.2.5 Goulburn River Diversion Remediation

The Goulburn River Diversion was constructed in 1982, prior to the commencement of open cut mining, to convey flood waters around UCML operations. The diversion is located to the south-east of the project area and is visible to road commuters along Ulan Road. The river banks throughout the reaches of the diversion have been eroded by overland flows. Earthworks and revegetation will be undertaken to stabilise the batter and improve surface drainage, which will also improve visual amenity of the Goulburn River Diversion.

Further information on the rehabilitation of the Goulburn River Diversion can be found in the *Goulburn River Diversion Remediation Plan (ULN SD PLN 0054)*. A description of proposed rehabilitation works is also included in the *MOP (ULN SD PLN 0079)* and *Conceptual Mine Closure Plan (ULN SD PLN 0084)*.

3.2.6 Ground Disturbance Permit

UCML use the XCN *Ground Disturbance Permit (XCN SD FRM 8.4.004)* for all new works onsite. The purpose of the Ground Disturbance Permit (GDP) is to ensure site clearing of vegetation and topsoil is planned and carried out in a manner to minimise SD impacts, however it is also used to identify any visual impacts of a project and to nominate appropriate control measures as required e.g. visual screening and painting of infrastructure with natural colours.

3.3 Maintenance of UCML Owned/Leased Land

UCML currently owns or leases approximately 18,000 hectares of land on and around the Ulan Mine Complex. This includes significant buffer land adjoining private property, public roads and national parks/state conservation areas. UCML also own a number of vacant blocks of land in Gulgong and Ulan Village and maintain responsibility for the maintenance of Ulan Road viewing area, on the eastern side of the mine.

General maintenance of UCML's buffer land mainly consists of regular weed control, fence maintenance and slashing/rubbish removal. The Community, Land and Property Coordinator is responsible for maintaining UCML's properties and the Ulan Road rest area.

3.4 Maintenance of Access Roads

There are three (3) main access roads into Ulan Coal Mine:

- Ulan Underground Mine/Corporate Office Access Road;
- Ulan Surface Operations (USO) Access Road; and
- Bobadeen Road.

Regular maintenance of these roads includes slashing, grading and rubbish removal (as required). The Surface Projects Coordinator (Ulan No. 3 Underground) is responsible for maintaining the Bobadeen Road and Ulan Underground Mine/Corporate Office Access Road. The USO Production Superintendent (or delegate) is responsible for maintaining the USO Access Road.

4. MEASUREMENT AND EVALUATION

4.1 Inspections

The Environment and Community Officer (or delegate) is responsible for undertaking and recording workplace environmental inspections to ensure compliance with the *EMS (ULN SD PLN 0050)*. Environmental inspections include inspecting areas for dust generating activities, excessive weeds and general housekeeping. Where corrective action is required to address a visual issue, an action will be entered into XstraSafe for relevant personnel to follow up.

If dust is identified as an issue during an inspection, dust suppression will be organised as soon as possible. Further information on dust management can be found in the *AQGGMP (ULN SD PLN 0059)*.

4.2 Audit

A lighting audit will be undertaken annually for all new infrastructure to ensure UCML is complying with *Australian Standard AS4282 (INT) 1997 – Control of the Obtrusive Effects of Outdoor Lighting*.

Any actions from this audit will be entered into XstraSafe.

4.3 Community Complaints

Community complaints management includes receipt of complaints, investigation, implementation of appropriate remedial action, and feedback to the complainant as well as communication to site management or personnel and notification to external bodies where necessary.

All community complaints received by the Ulan Mine Complex are managed in accordance with the *Social Involvement Plan (SIP) (ULN SD PLN 0015)*. UCML have developed a *Complaints Procedure (ULN SD PRO 0001)* to assist in recording complaints, complaint investigation and follow up actions. This procedure has been established to record all complaints received by UCML and provides the company with an important measure, which assists in the overall assessment of SD performance. The Community, Land and Property Coordinator is responsible for complaints management.

UCML maintain a 24 hour, 7 day a week community and employee information telephone line **1800 647630** and email address ulancomplaints@xstratacoal.com.au to:

- manage complaints received by UCML that may be a result of mining and/or associated activities conducted within land owned or managed by UCML;
- provide access to open cut blasting information for interested stakeholders; and
- provide access and incident information to employees during emergency situations.

In accordance with Condition 10, Schedule 5 of the Project Approval, access to the Ulan Mine Complex's Community Complaints Register is via the UCML internet site at www.ulancoal.com.au for the purposes of external review and transparency. Details of all community complaints are also reported in UCML's Annual Review report (formerly the Annual Environmental Management Report (AEMR)).

Further information on complaints management can be found in Section 3 of the *EMS (ULN SD PLN 0050)*.

4.4 Reporting

All external and internal reporting is undertaken in accordance with the reporting requirements of the *EMS (ULN SD PLN 0050)*.

A summary of any visual or landscape management issues and actions arising throughout the year will generally be presented in the Annual Review Report.

5. REVIEW AND IMPROVEMENT

Ongoing monitoring and review on the performance and implementation of this plan will be undertaken in accordance with *XCN SD GDL 16.0 Monitoring and Review* and Section 5 of the *EMS (ULN SD PLN 0050)*.

The Environment and Community Manager (or delegate) will review this plan at least every three years or earlier if required. This plan is an internal management plan and as such, it does not need to be submitted to DP&I for approval.

6. DEFINITIONS

Term	Definition
AEMR	Annual Environmental Management Report
AQGGMP	Air Quality and Greenhouse Gas Management Plan (ULN SD PLN 0059)
AS	Australian Standard
BMP	Biodiversity Management Plan (ULN SD PLN 0026)
CHPP	Coal Handling and Preparation Plant
DA	Development Approval
DP&I	NSW Department of Planning and Infrastructure
EA	Environmental Assessment
ECM	Environment and Community Manager
EMS	Environmental Management Strategy (ULN SD PLN 0050)
GDP	Ground Disturbance Permit
LW	Longwall
MOP	Integrated Mining Operations Plan (ULN SD PLN 0079)
Mtpa	Million tonnes per annum
PA	Project Approval
SD	Sustainable Development
SIP	Social Involvement Plan
SMP	Subsidence Management Plan
UCML	Ulan Coal Mines Limited
USO	Ulan Surface Operations
XCN	Xstrata Coal NSW

7. ACCOUNTABILITIES

Role	Accountabilities for this document
Operations Manager	<ul style="list-style-type: none"> • Approve appropriate resources for the effective implementation of this Plan. • Ensure the effective implementation of strategies designed to reduce visual impacts from the operation. • Authorise internal and external reporting requirements of this plan. • Approve subsequent revisions of this Plan.
Environment and Community Manager (ECM)	<ul style="list-style-type: none"> • Ensure any potential or actual visual impact issue is reported in accordance with corporate standards. • Ensure that operational changes consider the potential visual impacts on adjacent private landholders and road users e.g. lighting impacts. • Ensure all internal and external reporting requirements are met, including complaints reporting in accordance with EMS. • Ensure all reporting complies with internal and external monitoring standards, protocols and regulations. • Proactively engage government and community as required. • Coordinate the ongoing review of this plan. • Review and approve external reports e.g. Annual Review Report, prior to final approval by the Operations Manager. • Coordinate rehabilitation programs and tree screening projects in consultation with USO Production Manager.
Environment and Community Coordinator/Officer	<ul style="list-style-type: none"> • Maintain tree screen areas • Regularly report environmental performance to ECM. • Prepare internal and external reports for review by ECM. • Conduct periodic environmental inspections in accordance with the EMS. • Ensure any potential or actual visual amenity management issue is reported to the ECM. • Ensure that all monitoring records are effectively maintained on site in accordance with the EMS. • Ensure annual lighting audit is undertaken and enter actions into XstraSafe • Participate in the ongoing review of this Plan.

Role	Accountabilities for this document
Community, Land and Property Coordinator	<ul style="list-style-type: none"> • Contact point for Community Complaints in accordance with ULN SD PRO 0001 – Complaints Procedure. • Ensure effective management of all community complaints. • Ensure UCML owned residential properties are maintained in a manner that preserves their existing condition and sustains adequate visual amenity. This includes vacant residential land within Ulan Village and Gulgong. • Conduct periodic environmental inspections of UCML's buffer lands to identify any visual impact issues. • Ensure any potential or actual visual amenity management issue is reported to the ECM. • Proactively engage government and community as required.
Electrical Engineer	<ul style="list-style-type: none"> • Organise annual audit of outdoor lighting to ensure UCML's compliance with AS4282
Project Managers, Supervisors and Task Coordinators	<ul style="list-style-type: none"> • Ensure the any work requiring ground disturbance is approved prior to disturbance in accordance with EMS (where relevant). • Ensure any potential or actual visual impact issues, including excessive dust, are reported to the ECM. • Install and maintain erosion and sediment control structures, as required by the GDP
USO Production Manager	<ul style="list-style-type: none"> • Ensure lighting on the site is directed away from Ulan Road where possible. • Project manage the implementation of rehabilitation programs and tree screening projects around the Open Cut areas • Maintain the USO Access Road
Rehabilitation Contractor	<ul style="list-style-type: none"> • Implement rehabilitation programs and tree screening projects as directed by the ECM or USO Production Manager (or delegate)
Surface Projects Coordinator	<ul style="list-style-type: none"> • Maintain the Bobadeen Road and Ulan Underground Mine/Corporate Office Access Road.
All employees and contractors	<ul style="list-style-type: none"> • Ensure any potential or actual visual impact issues, including excessive dust, are reported to the Project Manager, Supervisor or Task Coordinator.

8. REFERENCES

8.1 Australian Standards

- AS4282 (INT) 1997 – Control of the Obtrusive Effects of Outdoor Lighting

8.2 Xstrata plc

- Xstrata SD Policy

8.3 Xstrata Coal NSW

- Ground Disturbance Permit (XCN SD FRM 8.4.004)
- Monitoring and Review (XCN SD GDL 16.0)
- Environment, Biodiversity and Landscape Functions (XCN SD GDL 0010)
- XCN Rehabilitation Improvement Program - Annual Rehabilitation Planning Guideline (XCN LP ANN 0001)

8.4 UCML

- Project Approval 08_0184
- Development Approval 113-12-98
- SMP Approvals for LW23-26 &W1 and W2-W3
- Environmental Management Strategy (ULN SD PLN 0050)
- Integrated Mining Operations Plan (ULN SD PLN 0079)
- Biodiversity Management Plan (ULN SD PLN 0026)
- Goulburn River Diversion Remediation Plan (ULN SD PLN 0054)
- Air Quality and Greenhouse Gas Management Plan (ULN SD PLN 0059)
- Conceptual Mine Closure Plan (ULN SD PLN 0084)
- Social Involvement Plan (ULN SD PLN 0015)
- Complaints Procedure (ULN SD PRO 0001)

8.5 External

- Umwelt (Australia) Pty Ltd, 2009. Ulan Coal – Continued Operations Environmental Assessment. Prepared for Ulan Coal Mines Limited.
- Multiskilled Resources Australia, 2010. Xstrata Coal Ulan Surface Operations and Ulan Underground Operations External Lighting Audit and Compliance with AS4282. 18 November 2010.

9. CONTROL AND REVISION HISTORY

9.1 Document Information

Property	Value
Approved by	Environment and Community Manager
Document Owner	Environment and Community Coordinator
Effective Date	06/12/2011
Keywords	Visual, amenity, landscape, screen, vegetation, rehabilitation

For a complete list of document properties, select **View Properties** from the document's context menu on the intranet.

9.2 Revisions

Version	Date reviewed	Review team (consultation)	Nature of the amendment
1	14 Dec 2011	Cheryl Henriques, Bertie Stanley, Jamie Lees	Updated to new template & to reflect PA 08_0184 conditions & commitments. Included accountabilities from old Visual & Landscape Mgmt Procedure also.
2			
3			